



South Port Sailing Club 2020 Harvest Moon Regatta – Sat Sept 26 Sailing Instructions

51st
Annual

- Rules** - The series will be governed by the rules as defined in The Racing Rules of Sailing, with an additional light-signal system for starting, being used along with normal signal flags. See details at bottom of Sailing Instructions.
 - If starting lights and flags are in conflict, times shall be taken from the flags.
- Notices to Competitors** – will be posted on the SPSC (temporary) Bulletin Board (Sunroom window)
- Changes to Sailing Instructions** – will be posted before 0800 on race day.
- Class Flags** – min 6"x6" visible on the backstay / JOG = White // Sharks = exempt // Spinnaker = Yellow
- Radio Communication** – RC will broadcast and endeavour to monitor VHF **CH 69**
- The Start** – The starting line will be between the RC boat mast, and the SPSC "S" buoy. First Warning Signal will be approx. 2PM. Starting sequence will be JOG, Shark, PHRF Spinnaker, each separated by approx. 10 minutes. Boats not starting are requested to remain clear of the starting area for other classes.
- Racing Marks** – (distances and headings below are approximate)

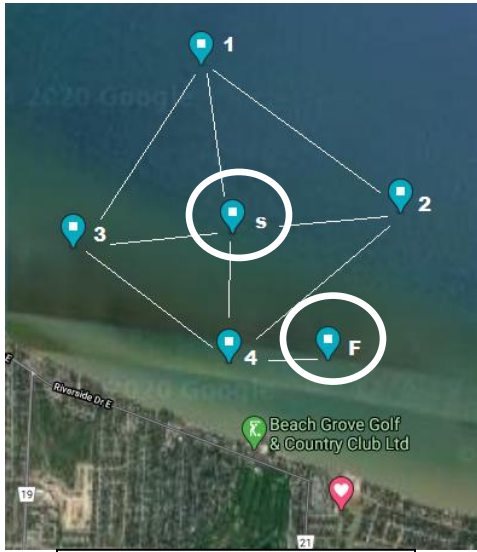
SPSC S (white mark)	N42 20.098 W082 51.080
Lake St Clair Weather buoy	N42 25.80 W082 40.80
Belle River mark (orange inflatable)	N42 18.598 – W082 42.665
SPSC F (white mark)	N42 19.625 W082 50.597

- Courses** – displayed during the starting sequence for the individual classes and can be different for each:
 - 1:** From the start line, sail 6.4nm 111°M to the Belle River mark leaving it to port, sail 7.3nm 19°M to the Lake St Clair Weather Buoy, leaving it to port, sail 9.5nm 237°M to the finish line. Total distance: 23.2nm.
 - 2:** From the start line, sail 9.5nm 61deg°M to the Lake St Clair Weather buoy, leaving it to starboard, then sail 7.3nm 199°M to the Belle River mark leaving it to starboard, then sail 6nm 288°M to the finish line. Total distance 22.8nm.
 - 3:** From the start line, sail 9.5nm 61°M to the Lake St Clair Weather buoy, leaving it to starboard, then sail 9.5nm 237°M to the finish line. Total distance 19nm.
 - 4:** From the start line, sail 6.4nm 111°M to the Belle River mark leaving it to port, then sail 6nm 288°M to the finish line. Total distance: 12.4nm.
- The Finish** – The finish line will be between the SPSC "F" mark, and the RC Boat (situated south of the mark). The RC boat will endeavour to remain on station at the finish until 10PM. As this race may conclude after sunset, competitors are to illuminate their sail numbers approaching and at the finish line for ease of identification.
- Late finishers** –
 - Racers finishing without the RC boat on station, are requested to take their own GPS time after passing the SPSC "F" mark, and if possible, record the sail numbers and/or names of the boats ahead and behind.
 - Boats retiring must notify the RC prior to leaving the racing area.
- Protests** –
 - Protest forms will be available in the clubhouse office after the RC boat docks.
 - Protest time limit is 1hour after the RC boat docks.
 - Notices will be posted no later than 1 hour after the protest time limit to inform competitors of hearings in which they are parties or named as witnesses.
 - Decisions of the protest committee will be final as provided in RRS 70.5.
- Disclaimer of Liability** - Competitors participate in the regatta entirely at their own risk. See RRS 4, Decision to Race. The organizing authority will not accept any liability for material damage or personal injury, or death sustained in conjunction with or prior to, during, or after the regatta.

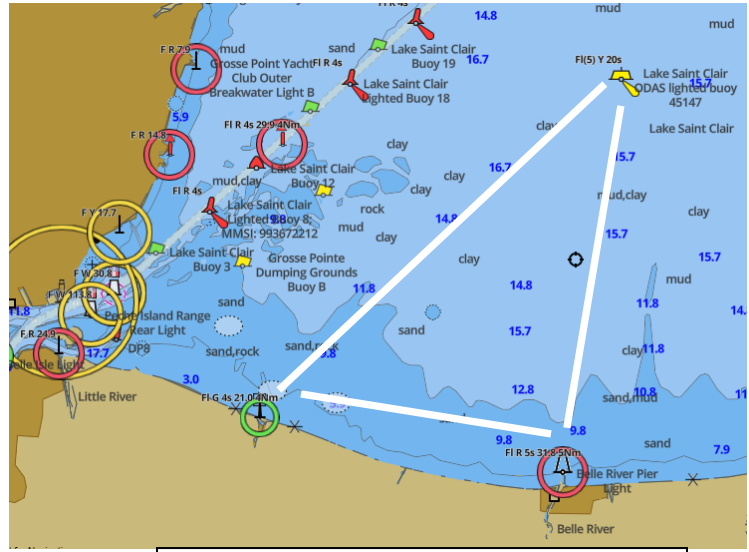


South Port Sailing Club 2020 Harvest Moon Regatta – Sat Sept 26 Sailing Instructions

51st
Annual



SPSC Race marks diagram



Lake St Clair Racing area diagram

Starting signal system:

- This year we are experimenting with a new semi-automated light and horn system that is intended to simplify the work on the Race Committee boat. Legacy flags will still be used by RC during this testing.
- Note that even with a fully automated starting system, flags will still be used to signal which class is starting, and to signal events such as postponements and recalls (individual and/or general).
- The automated system will light two stacked red lights on a pole mounted on the RC Boat, as shown below. Our typical sequence for each class start will look like this:

