



# 2022 Invitational Regatta Sailing Instructions

## 1. RULES

1.1. The regatta will be governed by the rules as defined in *The Racing Rules of Sailing*.

## 2. NOTICES TO COMPETITORS

2.1. Notices to competitors will be posted on the official notice board.

## 3. CHANGES TO THE SAILING INSTRUCTIONS

3.1. Any change to the sailing instructions will be posted before 1700 on the day it will take effect, except that any change to the schedule of races will be posted by 2000 on the day before it will take effect.

## 4. SIGNALS MADE ASHORE

4.1. Signals made ashore will be displayed from the flagpole.

## 5. SCHEDULE OF RACES

5.1. The first warning signal will be at 10:45.

5.2. The warning signal time for each fleet, and their corresponding warning flag are as follows

10:45 - Jog - White Flag

10:50 - PHRF C - Blue

10:55 - Melges 24 - Yellow

5.3. Subsequent races will follow immediately after the last boat in their fleet finishes.

## **7. THE COURSES**

**7.1.** Before the first warning signal, the RC will display the course identification number or the course to be sailed as detailed in the standard course bearings table.

**7.2.** The course diagrams are on the pages following SI 12. They show the courses, the order in which marks are to be passed, and the side on which each mark is to be left.

**7.3.** JOG and PHRF fleets will race course A, while the Melges 24 fleet will race course B.

**7.4.** The long distance race will be held only after two course races have been completed. There are four possible long distance courses. The RC will decide which course based on wind direction and strength. The start line will be perpendicular to the bearing of the first leg of the course and the finish will be perpendicular to the last leg of the course.

**7.5.** The Race Committee will display the long distance course number before the warning signal. The start and finish will be between Mark S and the Race Committee boat.

Course 1 - Mark S - R6 - DP7 - Mark S

Course 2 - Mark S - R6 - Mark S

Course 3 - Mark S - DP7 - Mark S

Course 4 - Mark S - DP7 - R6 - Mark S

## **8. THE START**

**8.1.** Races will be started by using RRS 26.

**8.2.** The starting line will be between a mast displaying an orange flag on the race committee vessel and the course side of the starting mark.

## **9. CHANGE OF COURSE**

**9.1.** The course for the PHRF and JOG fleets may not be changed but can be shortened. The RC will alert competitors of the new finish line before the last leg of the shortened course.

**9.2.** The course for the Melges 24 fleet may only be changed or shortened at the leeward mark. The RC will signal the new course with the course identification number (this changes rule RRS 33(a)(1)) or shortened course as the competitors approach the leeward mark. This applies only for Course B.

## **10. THE FINISH**

**10.1.** The finishing line will be between a mast displaying a blue flag on the race committee vessel and the course side of the finishing mark.

**10.2.** The finishing mark for all classes will be Mark S. If the RC boat leaves station at Mark S,

the Melges 24 class finishing line will be between Mark S and the orange ball placed by the RC before they leave. Competitors in the Melges 24 class then need to record their own finishes.

## 11. SCORING

11.1. One race is required to be completed to constitute a series.

11.2. (a) A boat's series score will be the total of her race scores.

11.3. Rule RRS A5.3 applies.

## 12. PROTESTS AND REQUESTS FOR REDRESS

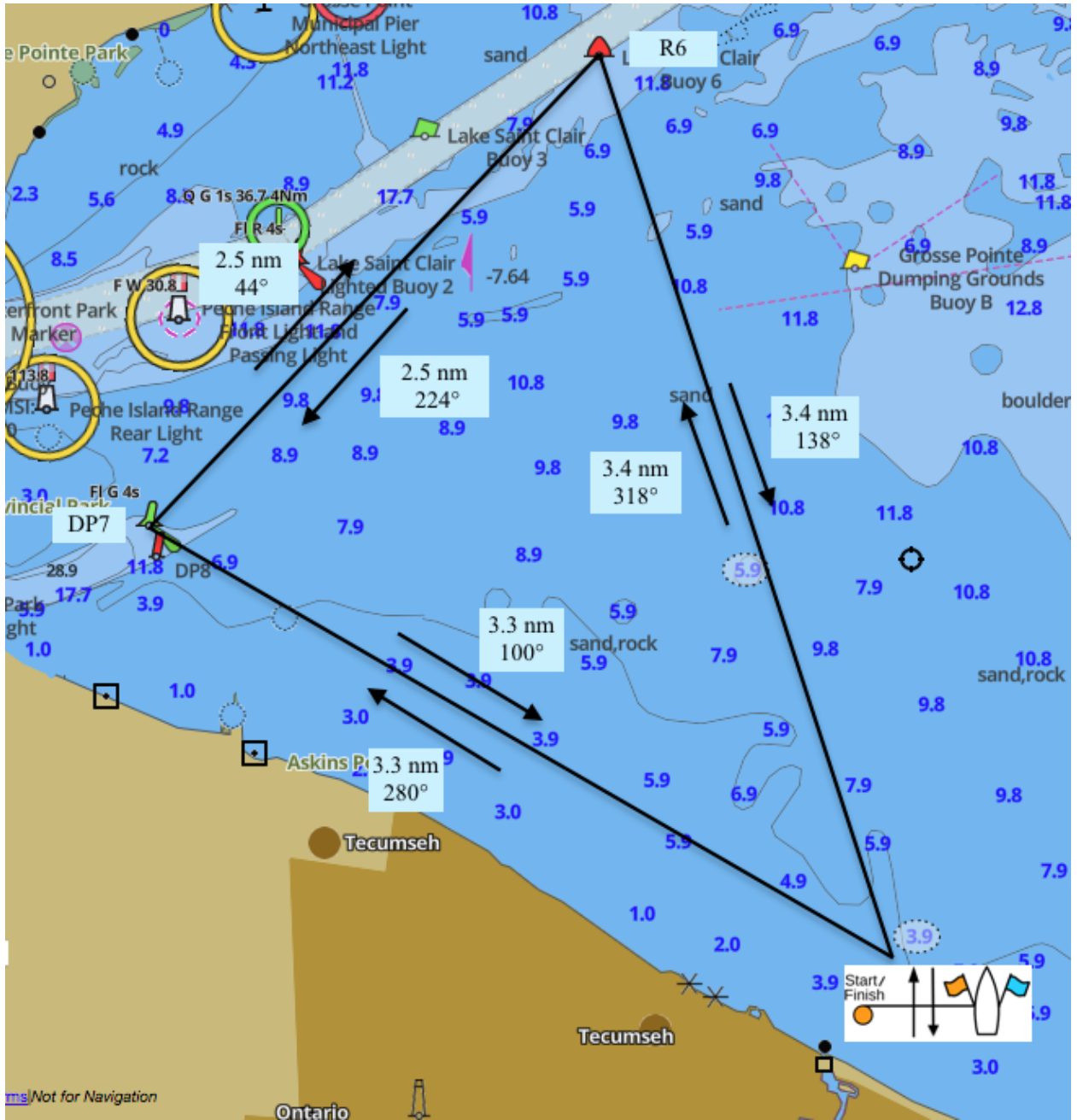
12.1. Protest forms are available at the race office. Protests and requests for redress shall be delivered there within the appropriate time limit.

12.2. For each class, the protest time limit is 60 minutes after the RC boat docks.

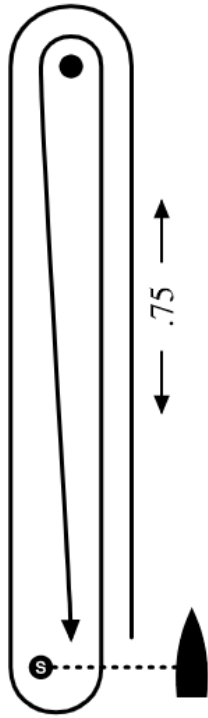
12.3. Notices will be posted no later than 60 minutes after the protest time limit to inform competitors of hearings in which they are parties or named as witnesses and where the hearings will be held.

Standard Course Bearings			
Course #1	Course #2	Course #3	Course #4
S→1 45°	S→2 90°	S→3 135°	S→4 180°
1→7 270°	2→8 315°	3→1 0°	4→2 45°
7→5 180°	8→6 225°	1→7 270°	2→8 315°
5→1 45°	6→2 90°	7→3 135°	8→4 180°
1→5 225°	2→6 270°	3→7 315°	4→8 0°
5→F 45°	6→F 90°	7→F 135°	8→F 180°
Course #5	Course #6	Course #7	Course #8
S→5 225°	S→6 270°	S→7 315°	S→8 0°
5→3 90°	6→4 135°	7→5 180°	8→6 225°
3→1 0°	4→2 45°	5→3 90°	6→4 135°
1→5 225°	2→6 270°	3→7 315°	4→8 0°
5→1 45°	6→2 90°	7→3 135°	8→4 180°
1→F 225°	2→F 270°	3→F 315°	4→F 0°

# Long Distance Course Diagram with Bearings and Distances



Course B



Course A

